

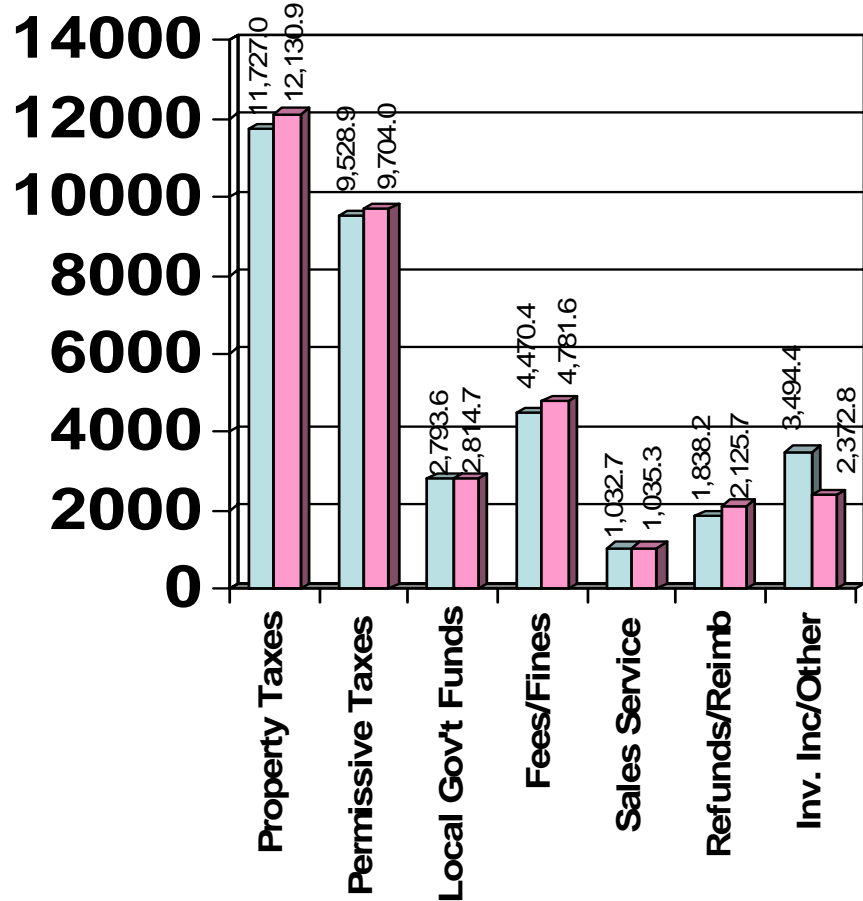
# MEDINA COUNTY GENERAL FUND FINANCIAL STATUS AS OF DEC. 31, 2010



# Revenue vs. Budget

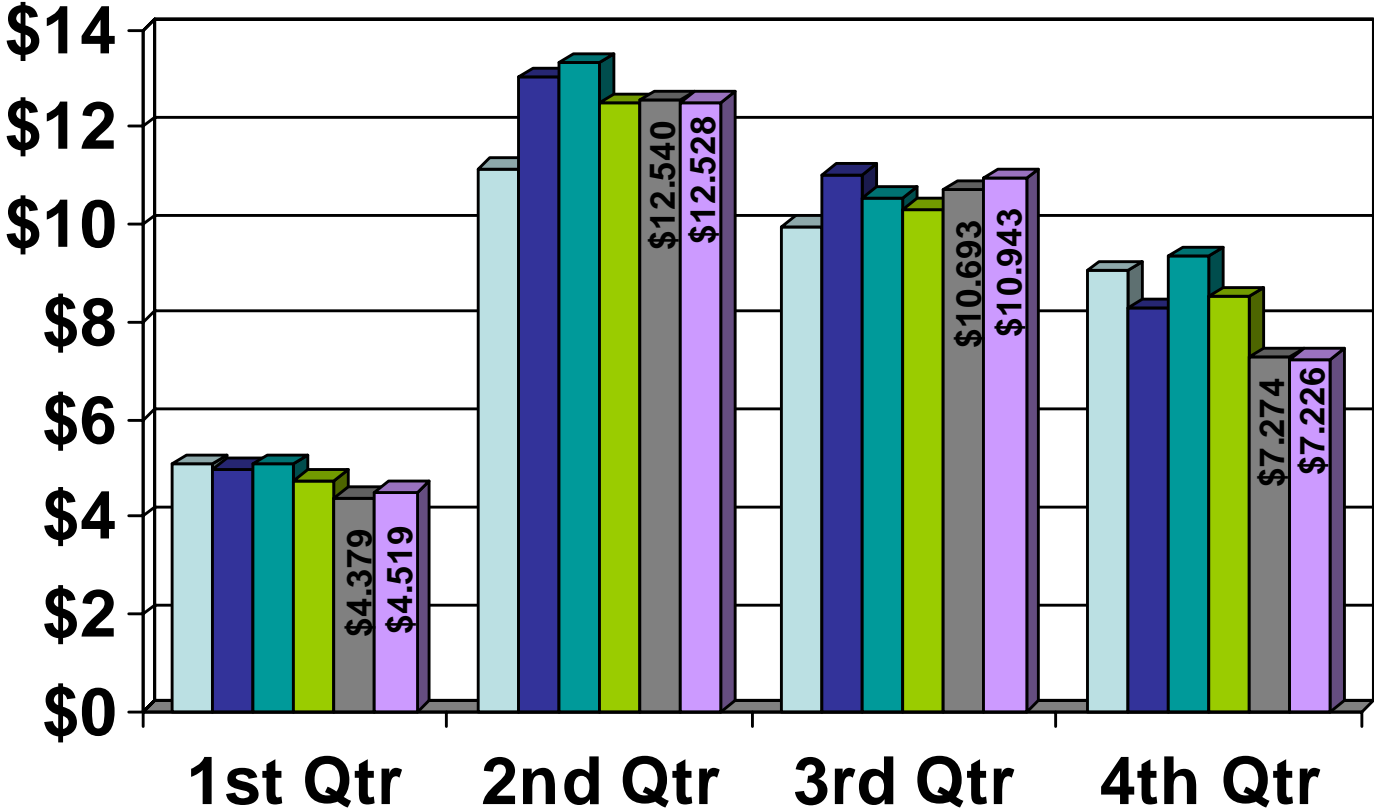
Revenue	Estimated % Annual Change CY 09 – CY 10	Actual % Change Jan – Dec. 09 vs. Jan – Dec. 10
Property Taxes*	1.02%	3.44%
Permissive Taxes	3.29%	1.84%
Local Gov't Funds	0.00%	.76%
Fees/Fines*	3.35%	6.96%
Sales/Service	-.89%	.26%
Refunds/Reimb	-2.08%	15.64%
Inv. Inc/Other	-25.20%	-32.10%
* Adjusted for timing differences		

Thousands



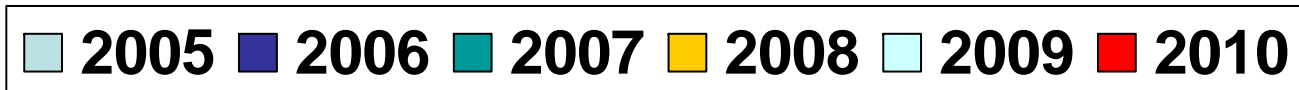
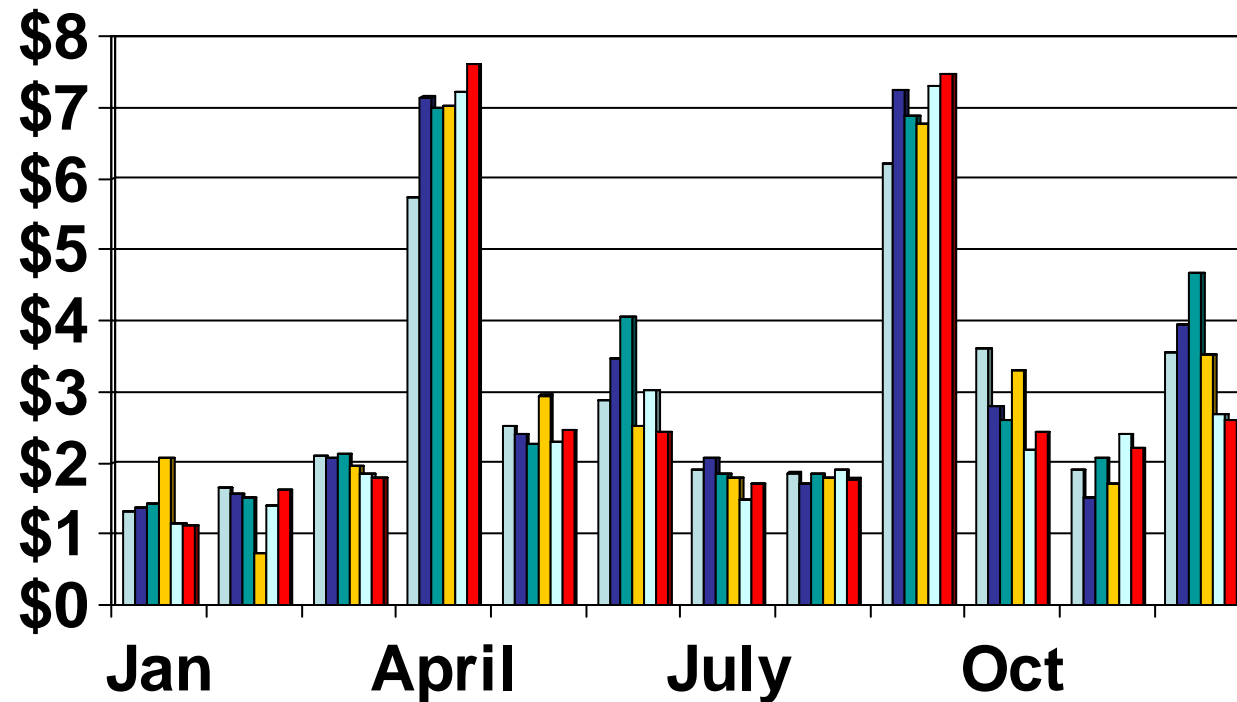
# Quarterly Revenues

Millions



# 5 YEAR REVENUE COMPARISON BY MONTH

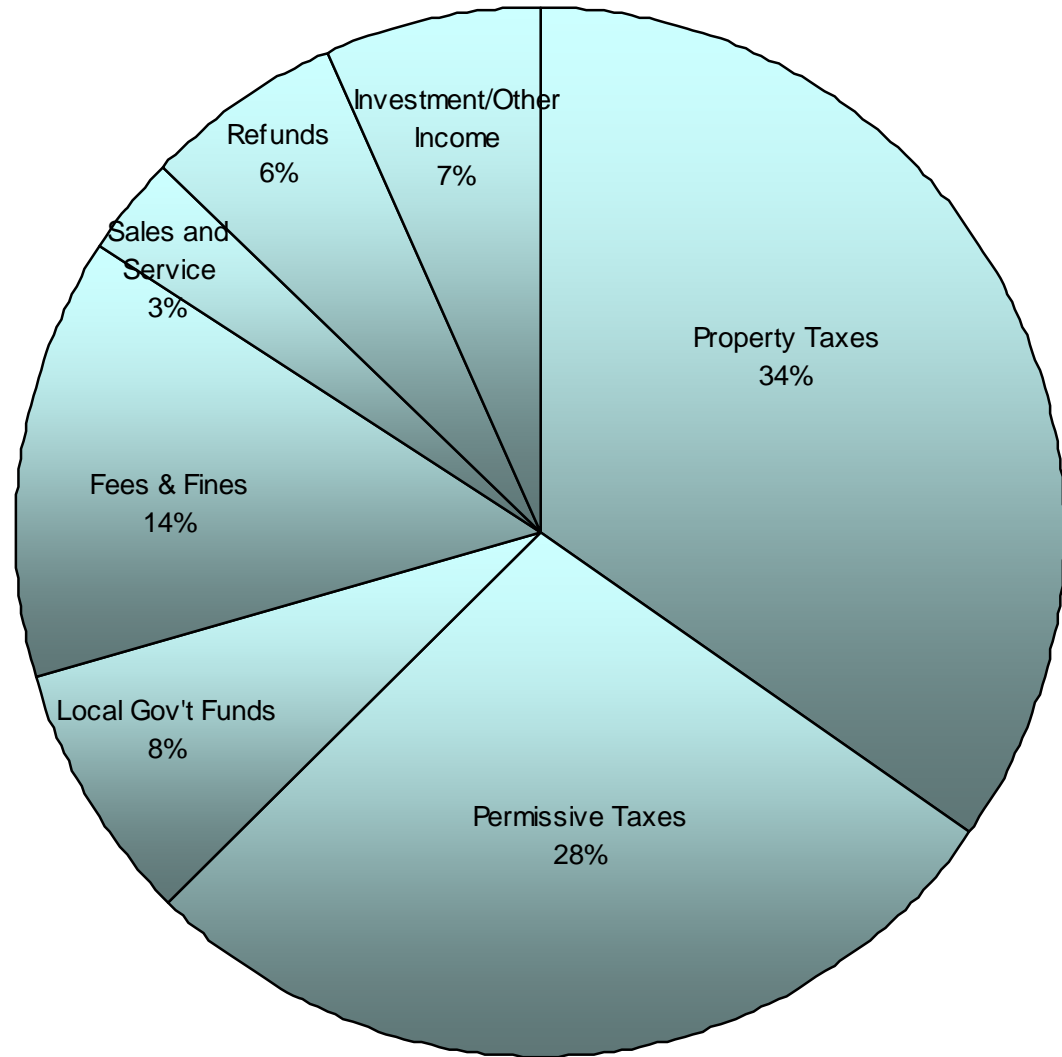
Millions



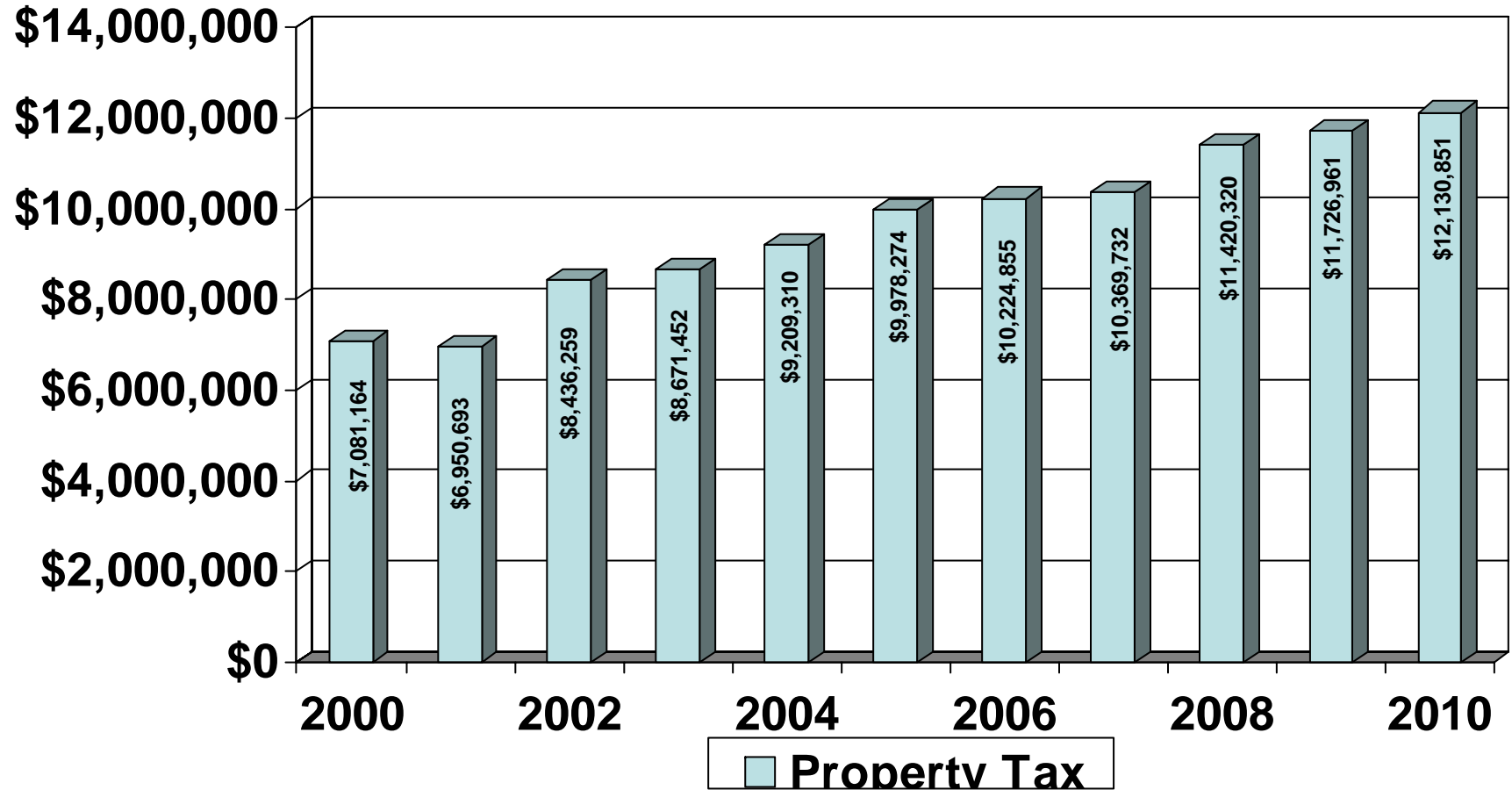
Please note that Property Tax and related revenues are adjusted for timing differences. \$5.32 million in property tax and related revenue was received in August, but will be shown as revenue collected in September in order to reflect revenues consistently from year to year.

# 2010 General Fund Revenues

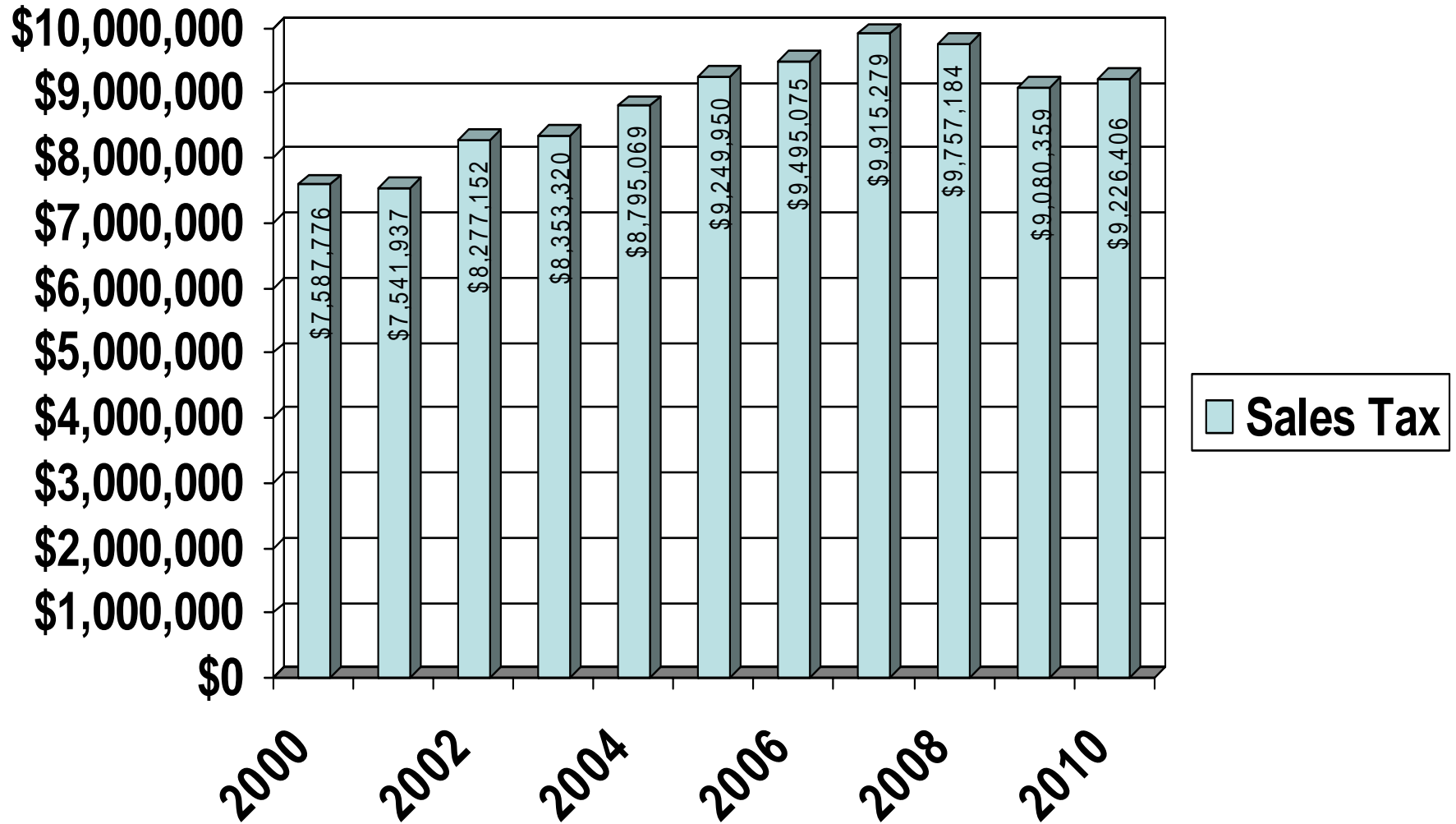
	2010 Revenues
Property Taxes	\$12,130,851
Permissive Taxes	\$9,703,960
Local Gov't Funds	\$2,814,697
Fees and Fines	\$4,781,578
Sales & Service	\$1,035,339
Refunds	\$2,125,742
Investment/Other Income	\$2,372,770



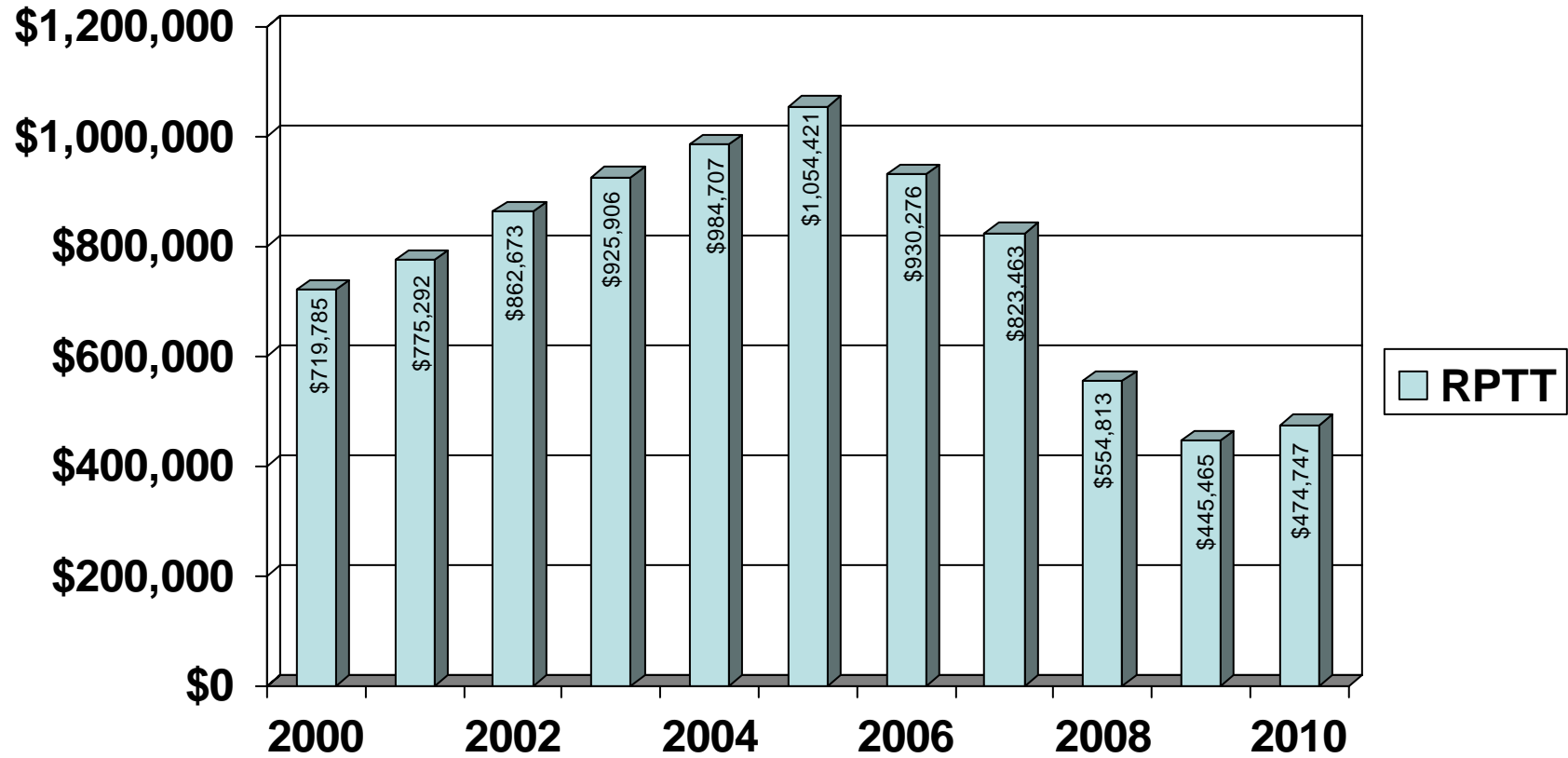
# Property Tax Revenue



# Sales Tax Revenue

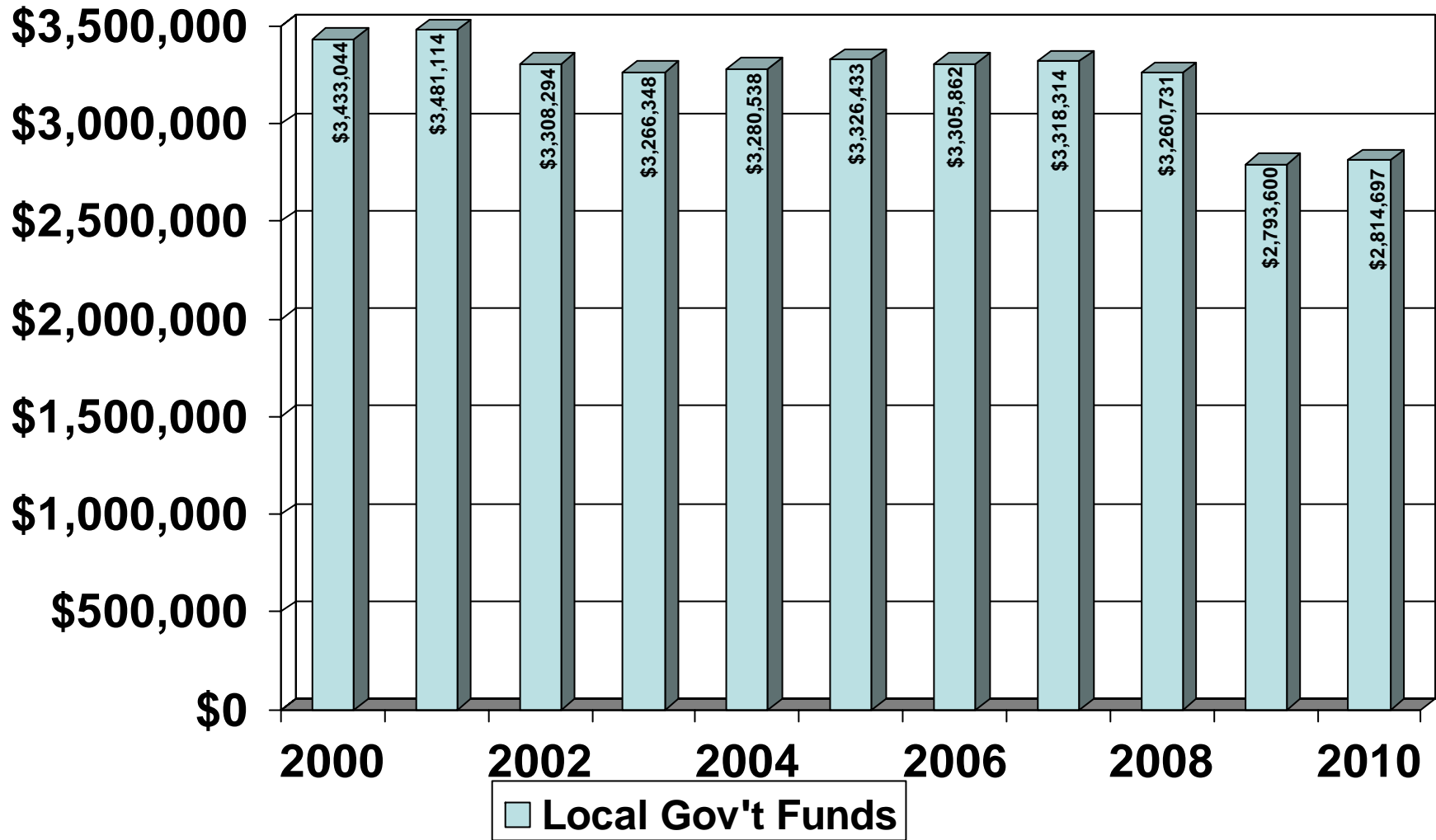


# Real Property Transfer Tax

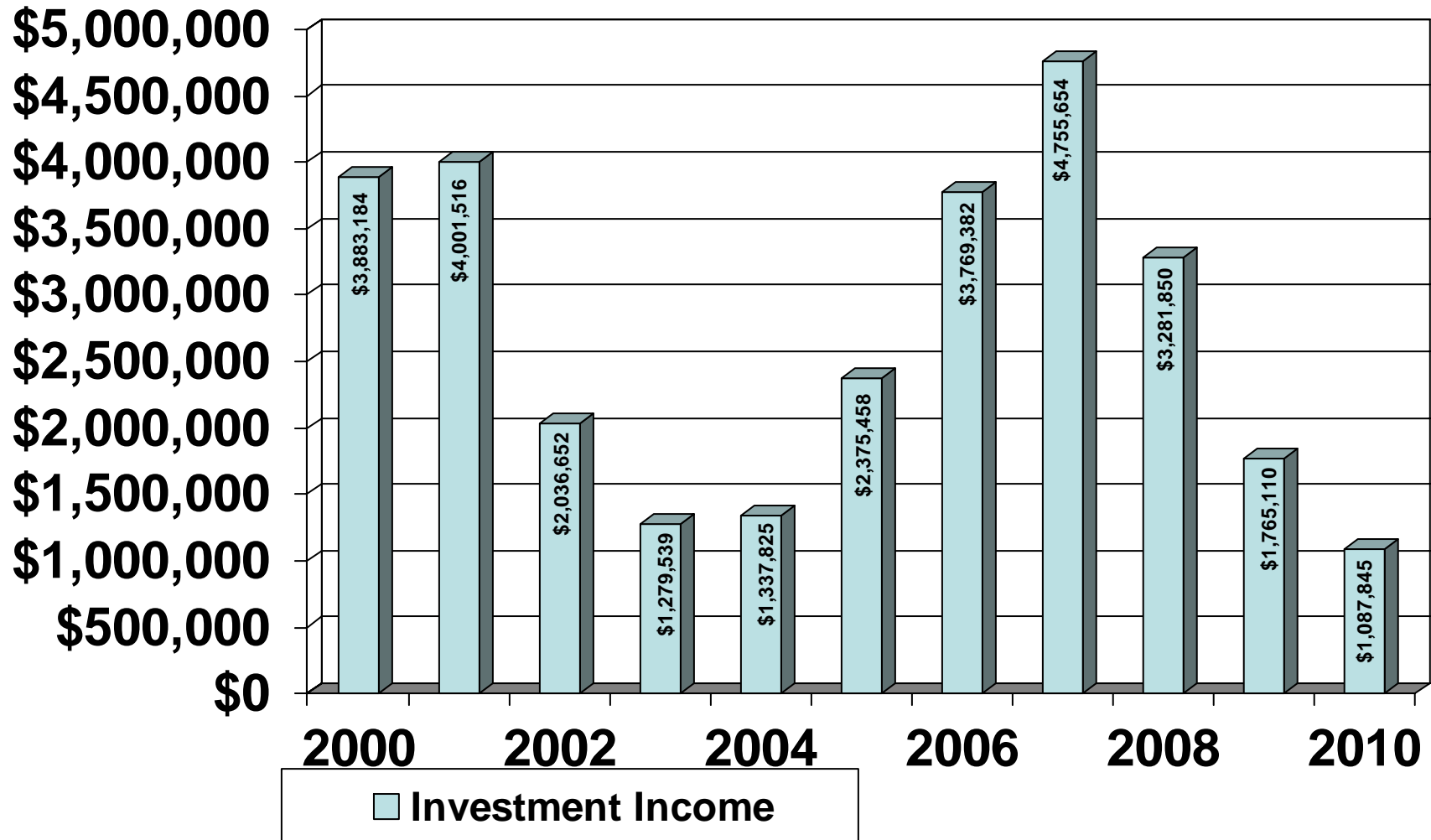




# Local Government Funds

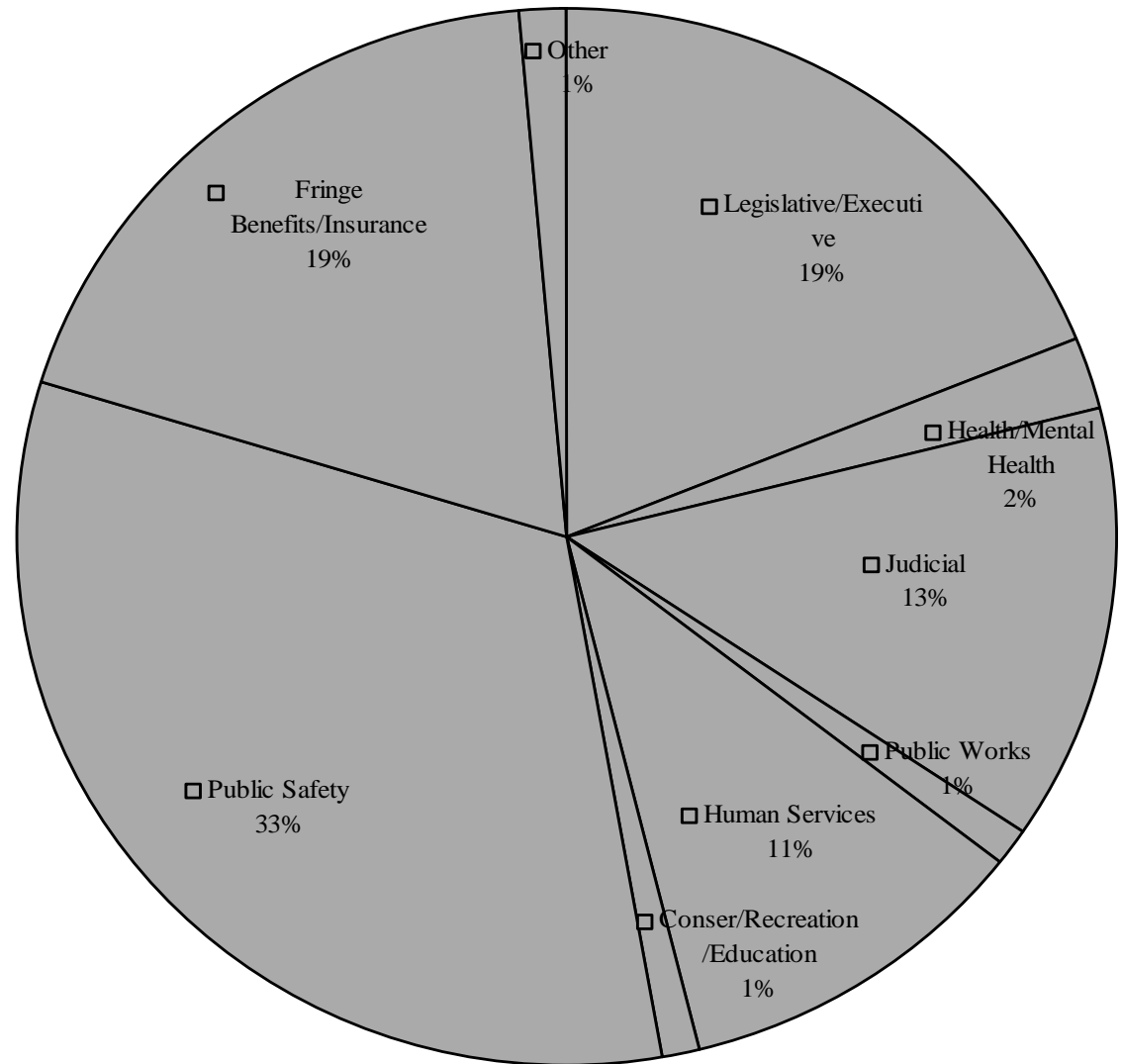


# Investment Income



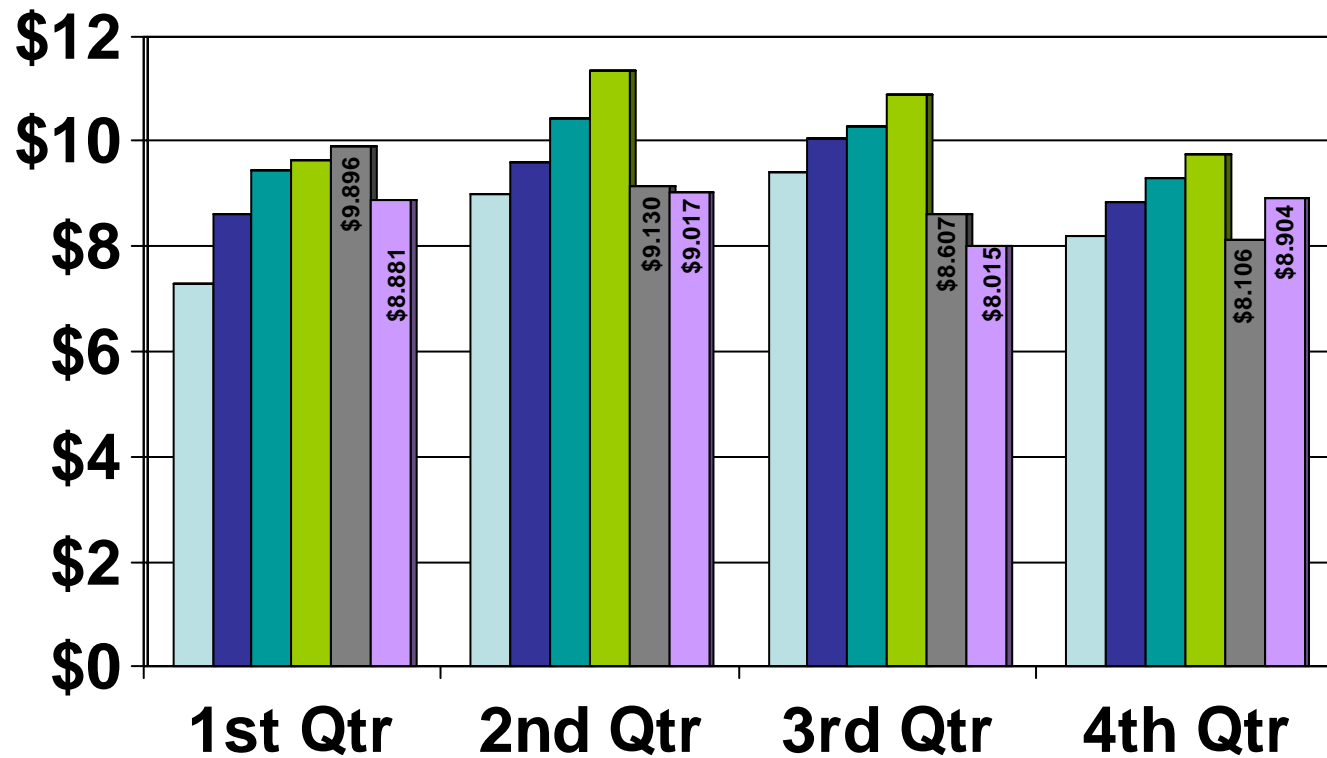
# 2010 EXPENSES

	2010 Expenses
Legislative/Executive	\$6,482,098
Health/Mental Health	\$702,300
Judicial	\$4,995,438
Public Works	\$360,031
Conser/Recreation/Education	\$347,660
Human Services	\$3,337,502
Public Safety	\$11,168,507
Fringe Benefits/Insurance	\$6,688,081
Other	\$484,513



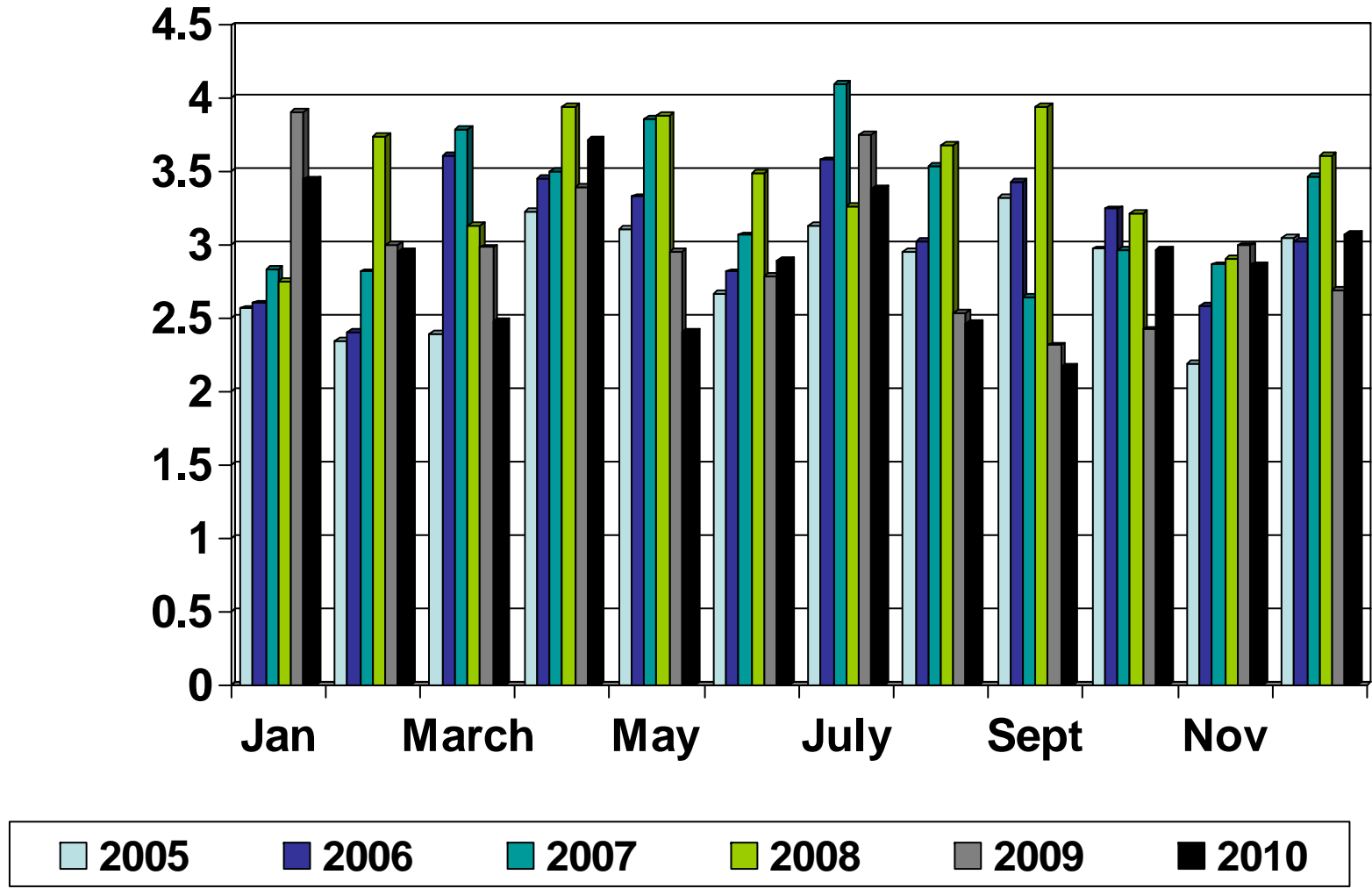
# QUARTERLY EXPENSES

Millions



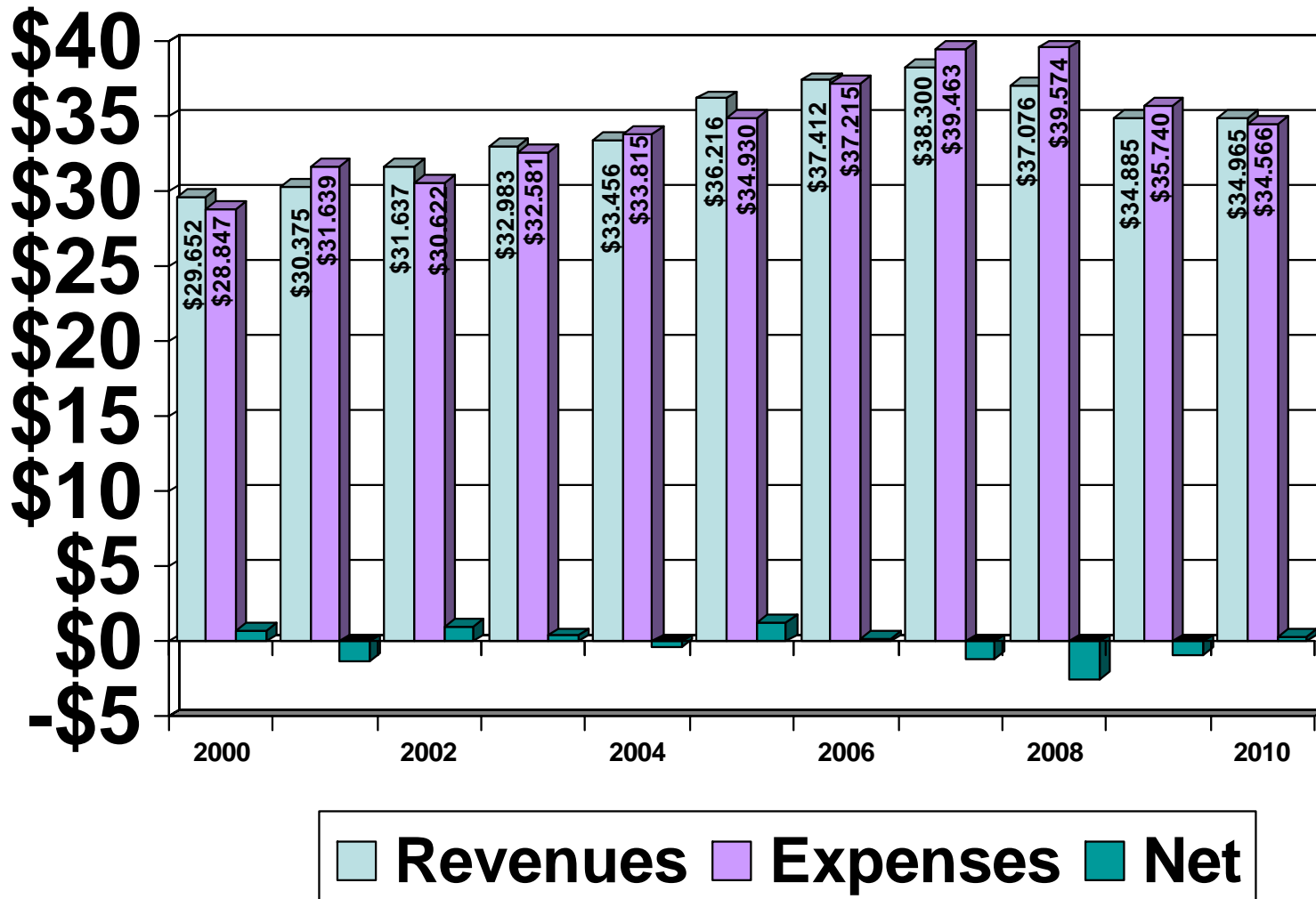
# 5 YEAR EXPENSE COMPARISON BY MONTH

Millions

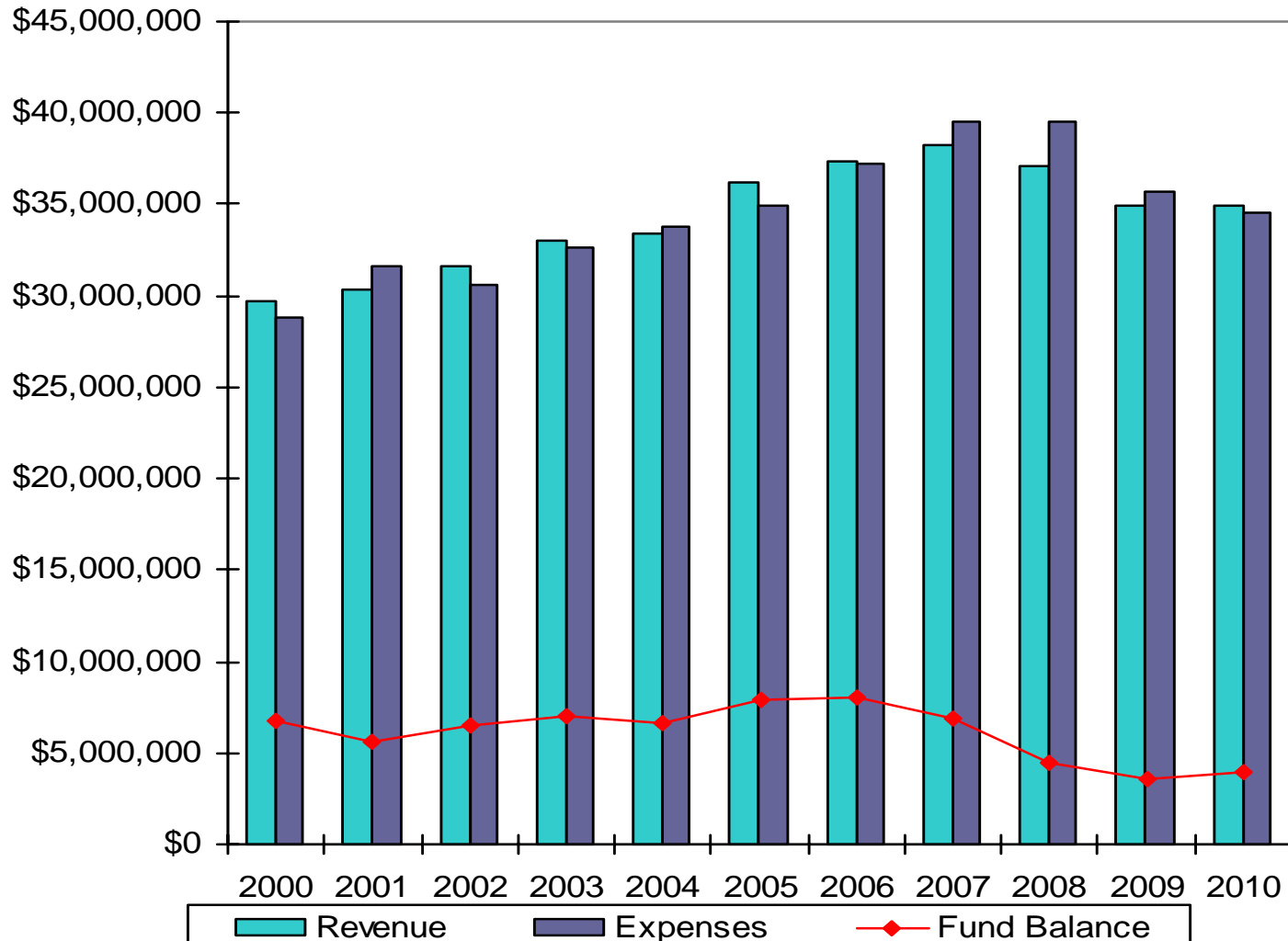


# Revenues vs. Expenses

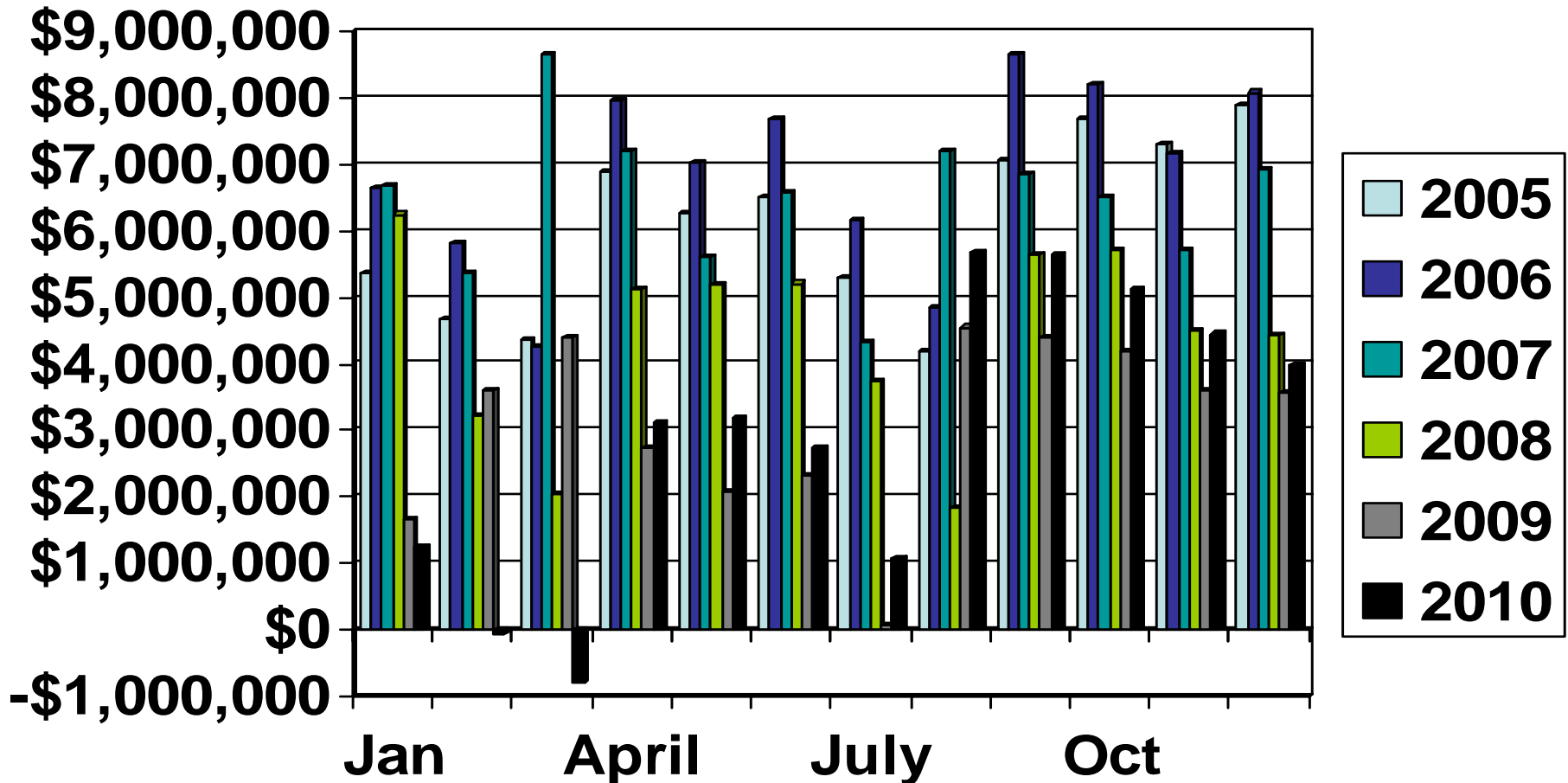
Millions



# REVENUES/EXPENSES/FUND BALANCE TRENDS

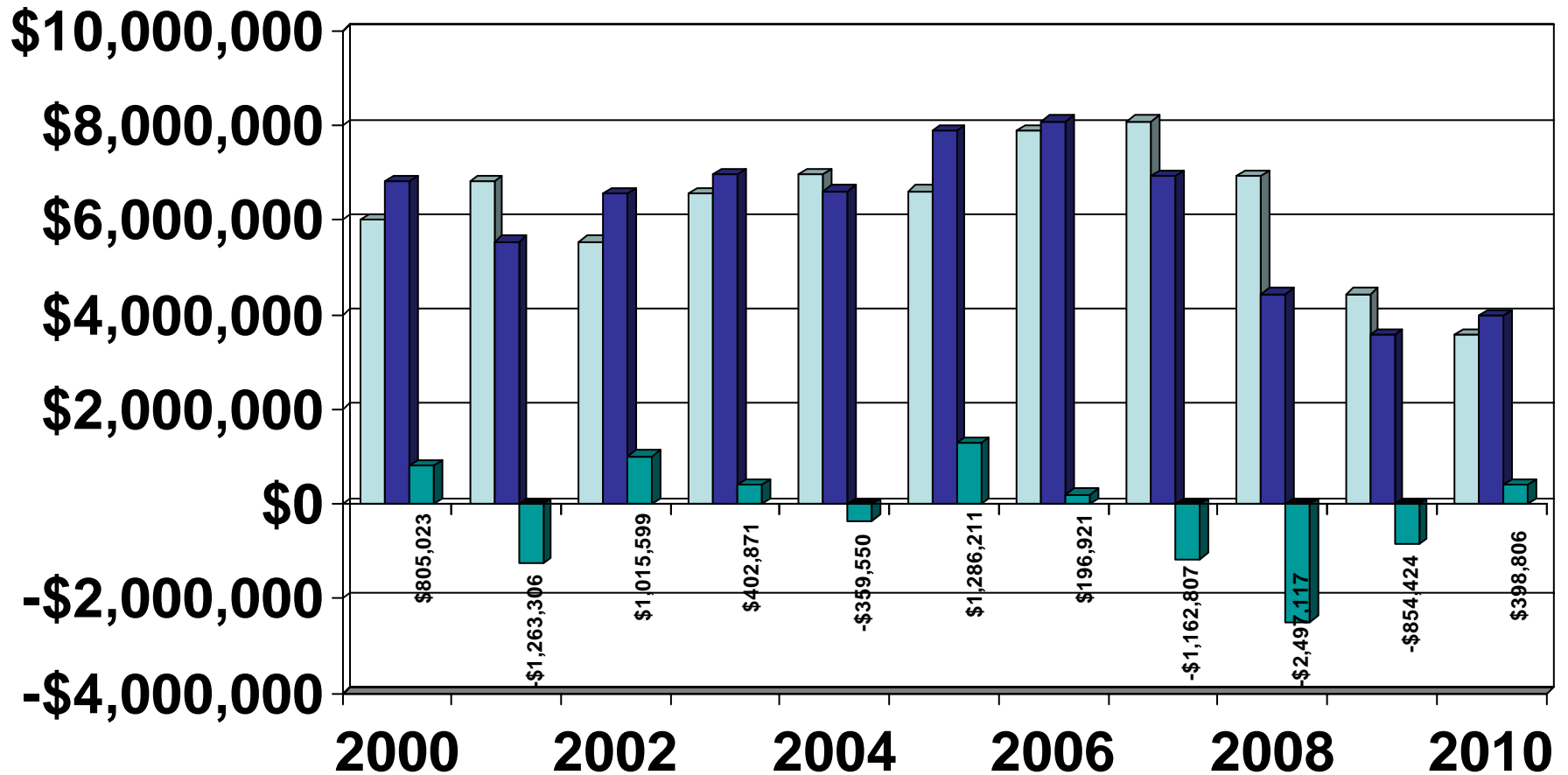


# 5 YEAR FUND BALANCE COMPARISON BY MONTH





# GENERAL FUND CASH BALANCE



Beginning Balance
  Ending Balance
  Net Gain/Loss